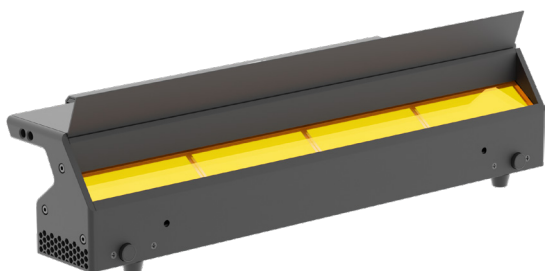


EclCyclorama 050

170W Linear soft CYC and Flood light with RGB+WarmWhite color mixing

ORDER CODE: ECLCYC050



TECHNICAL SPECIFICATION

LIGHT SOURCE

- Source: 170W RGB + Warm White
- Luminous flux: (with 80°x40° filter on board) 13'100lm @full
- Lux: @1m to wall and 1,5m height @ full (with standard filter) 625 lx - (with 40° filter) 1'530 lx - (with 10°x60° filter) 1'590 lx - (with 30°x60° filter) 1'690lx
- CRI: 93 @ 3200K; 91 @ 5600K
- R9: 91 @ 3200K; 95 @ 5600K
- TLCI: 87 @ 5600K
- TM30 Rf: 88,8 @ 5600K
- TM30 Rg: 107,4 @ 5600K
- Source life expectancy: > 50.000 h

OPTICS

- Beam angle: (HxV) 80° x 40°
- Additional optics: see available accessories

COLOUR SYSTEM

- Colour mixing: RGB + Warm White
- CTC: CTC control, + / - green correction, Tungsten emulation
- White presets: 2.800 K - 6.500K
- Colour wheel: virtual colour wheel with macros

DYNAMIC EFFECTS

- Control Resolution: 16bit Dimmer, Colours
- Special features: linear crossfade channel from any white to any colour; virtual CTO on colours

BODY

- Hardware on-board: sockets for Quick-Lock Omega bracket (clamp not included)
- Body: sturdy die-cast aluminium body
- Body colour: black
- Other: +/- 8° angle adjusting

CONTROL

- Protocols: DMX512, RDM, Art-Net, W-DMX
- W-DMX: included, wireless solution receiver
- RDM: RDM ready for remote monitoring and settings
- Display: Graphic User Interface
- Firmware upgrade: yes, via USB - DMX interface (UPBOX1) not included

ACCESSORIES & RELATED PRODUCTS

- | | |
|-------------------|---|
| ▪ ECLCYC050PO | Pole operated aluminium yoke bracket for pan/tilt for ECLCYC050 |
| ▪ ECLCYCBD050 | Upper and lower barn door for adjust the light beam for ECLCYC050 |
| ▪ ECLCYCF1060L050 | Light diffuser filter for ECLCYC series projectors, 10°x60°, lenght 50 cm |
| ▪ ECLCYCF3060L050 | Light diffuser filter for ECLCYC series projectors, 30°x60°, lenght 50 cm |
| ▪ ECLCYCF40L050 | Light diffuser filter for ECLCYC series projectors, 40°, lenght 50 cm |
| ▪ ECLCYCOHB | Orientable hanging bar for ECLCYC series projectors |

EclCyclorama 050 is a soft-edge, linear cyclorama and floodlight, designed in a surprisingly low profile form factor to meet applications at both front and end of the stage, offering an unprecedented level of brightness in its category. The fixture is equipped with a custom and calibrated RGB+WarmWhite LED source, which is capable to deliver a linear and high quality white reproduction of the entire spectrum with high CRI, TLCI and TM30 performances. The Optical system has been designed to offer a very wide asymmetric beam angle, and capable of a superior lumen efficiency, making the **EclCyclorama** range a very flexible solution, suitable for both application where fixture are connected each other or separated by a considerable distance, without worrying of dark-edge or uniformity gaps. The fixture is extremely user firendly and offers a multitude of control possibilities being DMX, RDM, Artnet and Wireless DMX.

MAIN FEATURES

- RGB+WarmWhite colour systems allows high quality of whites (CRI 93 @ 3200K) and bright colours.
- Slim design, with only 12 cm height for easy implementation in the front or at the back of the stage.
- Wide Asymmetric beam angle to allow flexible installation at modular distances between fixtures
- Hardware designed with tilt angle adjustment, beam control and flexible hanging and ground stacking applications.

ELECTRONICS

- Dimmer curves: Selectable dimming modes available
- Strobe / shutter: 1-30 Hz, electronic
- Display battery: self-charging battery backup
- Operating temperature: -10° ~ +45°
- LED Control: flicker free frequency with adjustable PWM
- Selectable PWM: 600 ~ 25.000 Hz

ELECTRICAL

- Mains power supply: 100-240 V – 50/60 Hz
- Max power consumption: 180W
- Power factor: >0,94

PHYSICAL

- Cooling: heat sink without fan
- Suspension and fixing: any position with quick-lock omega brackets
- Signal connection: Amphenol XLR 5p IN/OUT connectors
- Data connection: RJ45 IN/OUT
- Power connection: Seetronic powerCON waterproof IN/OUT connectors
- IP rating: IP20
- Dimensions (WxHxD): 500x119x148mm
- Weight: 5kg

- | | |
|--------------|---|
| ▪ FCLECLCYC | Flightcase for 8 pcs of ECLCYC100 or 16 pcs ECLCYC050 divided on two layers |
| ▪ OS25 | Quick-Lock omega bracket |
| ▪ UPBOX1U | Firmware uploader kit, USB IN, 3-pin XLR DMX OUT, USB OUT |
| ▪ OS25 | Quick-Lock omega bracket |
| ▪ UPBOX1U | Firmware uploader kit, USB IN, 3-pin XLR DMX OUT, USB OUT |
| ▪ FCLPANEL3U | Flight case for 3 pcs of ECLPANELTWC |
| ▪ UPBOX1U | Firmware uploader kit, USB IN, 3-pin XLR DMX OUT, USB OUT |

COLOUR PRESET FULL ON

Beam angle 50% 80°x40°



Total lumen output:

13100 lm

Peak candela output:

13655 cd

PRODUCT NAME:

ECL CYC050

MEASUREMENT CONDITIONS:

Beam angle:

Filter Native

Target:

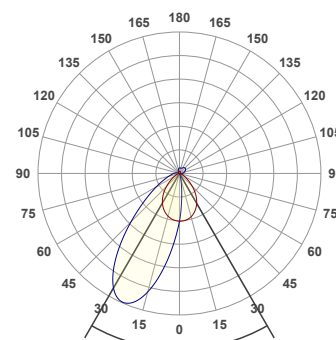
Full On

Operator:

Paolo Carvone

Date and time:

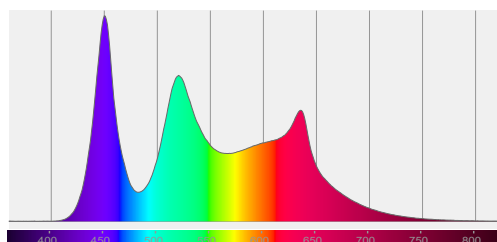
25/05/2020 13:15:32



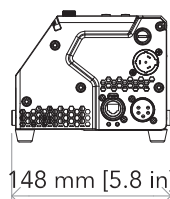
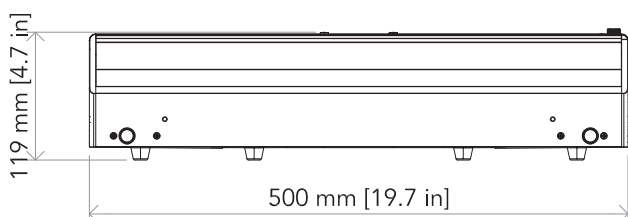
x(red curve) beam angle 50% 79.8°

y(blue curve) beam angle 50% 40°

Spectra



TECHICAL DRAWINGS



For more product
info and downloads
visit our website

