



AVB-192 Ethernet AVB Network Card Installation

The AVB-192 Ethernet AVB Network Card for the VENUE | E6L engine expands the audio networking capabilities of your VENUE | S6L system. Visit www.avid.com/S6Lsupport for information on the number and type of expansion Network cards the E6L engine currently supports.

⚠ *Installing expansion Network cards in your E6L engine requires VENUE software 5.1 or higher. If necessary, update your system software on both the S6L control surface and E6L engine, then proceed with this installation.*

Required Materials

- (1) AVB-192 AVB Network Card or other supported card
- Ethernet cable, for internally connecting Network cards
- Phillips #1 screwdriver (not included)
- Anti-Static wrist strap (not included)
- Foam or other soft surface to place the card on (not included)

Installing a Network Card

Installing a Network card in E6L consists of the following steps:

- Removing the E6L engine core
- Installing the card
- Replacing hardware
- Confirming Installation

Removing the E6L Engine Core

Network cards are installed in the E6L engine core, which slides out of the E6L chassis.

To remove the E6L engine core

- 1 Put on your anti-static wrist band and configure it according to its instructions.
- 2 Shut down your system, and disconnect any cables connected to your E6L engine.
- 3 Place your E6L on a table or other flat surface that provides enough room for the E6L engine core to be removed comfortably. Make sure your surface is clear of any debris.

💡 *If your E6L engine is installed in a rack and there is enough room inside the rack to access the inside of the core, instead of completely removing the core you can slide it out until it catches, and then proceed with installation.*

- 4 On the back of the E6L, loosen the four thumbscrews that secure the core to the engine chassis.

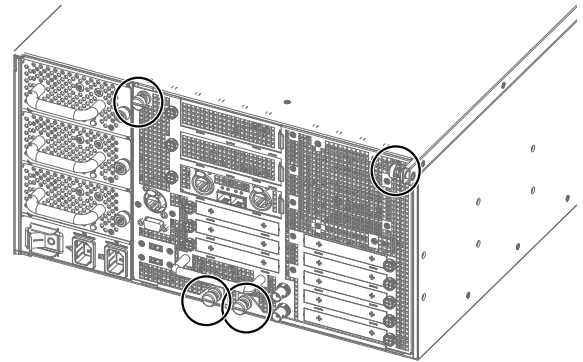


Figure 1. Four thumbscrews on the back of the E6L

- 5 Simultaneously pull the two bottom thumbscrews outward so the latches they are attached to are fully extended, as shown in Figure 2.

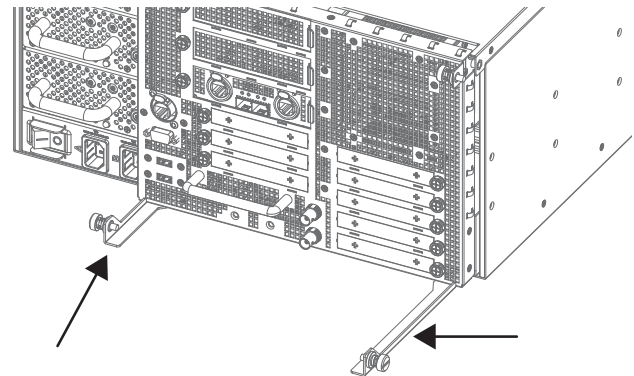


Figure 2. Latches fully extended

- 6 Using the handle, slowly slide the core partially out, locate the interior catch on the right side of the tray, and press it to release the core from the chassis.

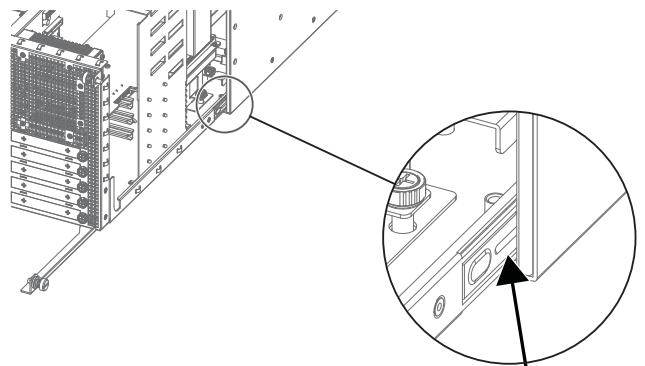


Figure 3. Location of the interior catch

- 7 Slowly slide the core out of the E6L chassis completely, and place it on your work surface.

⚠ *The core will not slide out of the E6L chassis until the latches are fully extended and the catch has been released.*

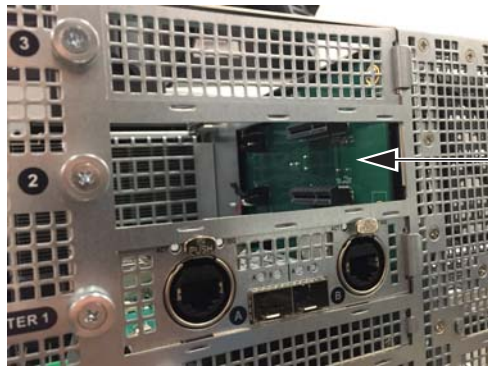
Installing the Card

The E6L has three PCIe slots for Network cards (slots 1–3), that increase in number from bottom to top. The Network card in the Master 1 slot (the bottom slot) is the “Master” Network card, and is pre-installed. Install your additional Network card in the next available open Network slot above the currently installed card(s).

💡 *The images shown on the following pages might not exactly match your configuration. Cable colors or connections shown might differ.*

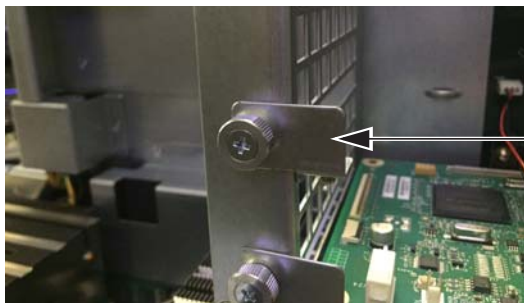
To install the card:

- 1 Locate the Network slot in which you want to install the card. Always install new cards in the next available slot.
- 2 Remove its slot cover by loosening the slot’s captive thumbscrew. You may discard the slot cover.



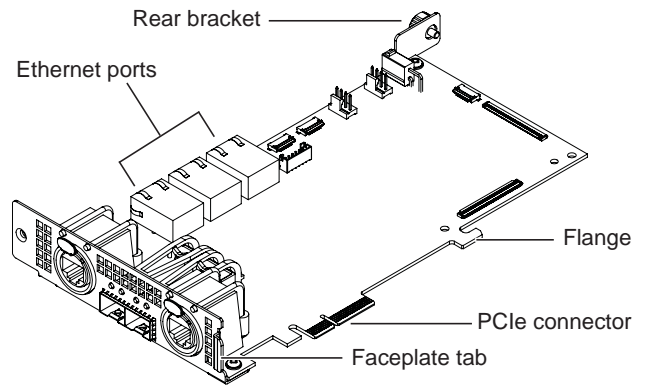
Network slot 2 cover removed

- 3 Looking inside the unit from the left side, locate the slot in which you are installing the card. A rear bracket in the corresponding slot is attached to the chassis by a thumbscrew. Loosen the thumbscrew and remove the bracket from the unit. You may discard this bracket and thumbscrew.



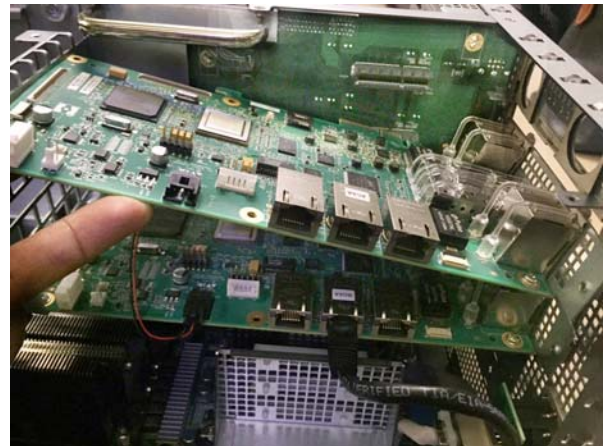
Pre-installed rear bracket in slot 2

- 4 Remove the card from its packaging and hold it by its edges.



AVB-192 Ethernet Network Card

- 5 Inside the unit, place the face of the card into position in the slot, with the back of the card tilting upwards.



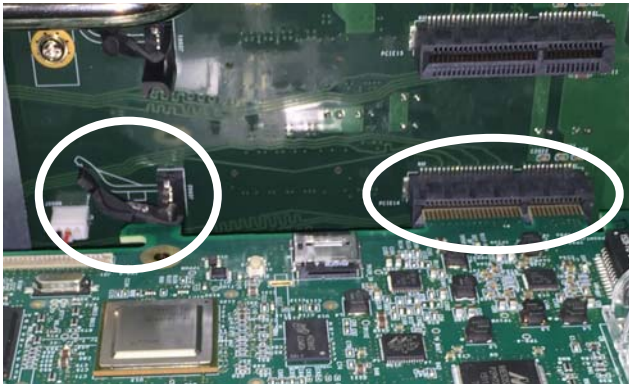
Placing the card into position inside the engine

- 6 Using two hands, hold the front of the card in place in the slot with one hand, and slowly move the back of the card downwards along the sheet metal until the card is horizontal.
- 7 Once the card is horizontal, make sure the tab on the faceplate of the Network card is positioned on the outside of the slot.



Proper position of the Network card faceplate tab

- 8 Align the PCIe connector on the card with the corresponding PCIe port, and align the flange on the card with the retaining clip on the PC board.

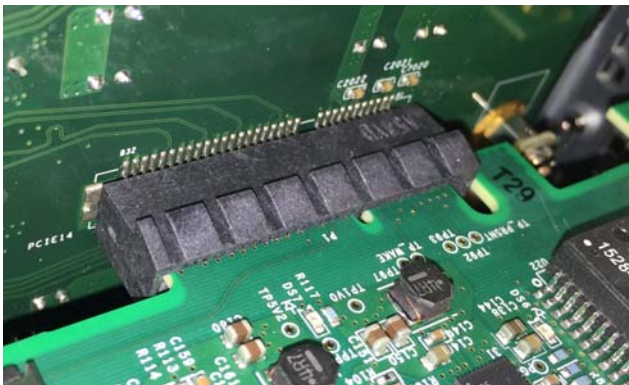


Aligning the and the PCIe connector to the port (right) and the card flange to the retaining clip (left)

- 9 Lift the tab on the retaining clip, and then press the card firmly into the PCIe port and clip.

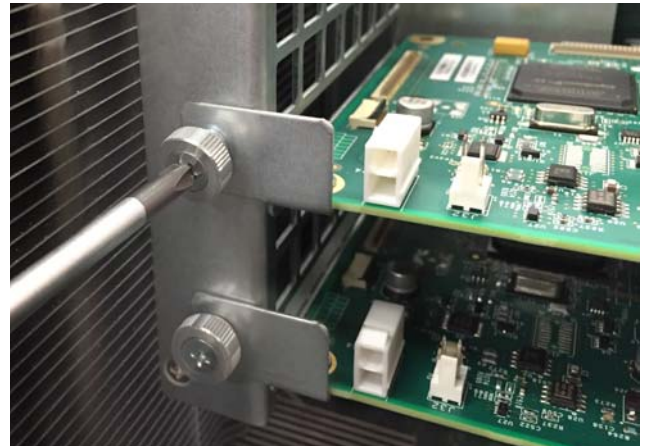


Lifting the tab on the retaining clip



The Network card PCIe connector properly seated in the PCIe slot

- 10 When the card is properly seated in the slot, tighten the rear bracket captive thumbscrew to secure the back of the card to the chassis.



Tightening the rear bracket thumbscrew

- 11 Connect the included Ethernet cable from any available Ethernet port on the bottom Network card to any available Ethernet port on the newly installed card.



Ethernet cable connected between cards

- 12 Tighten the exterior captive thumbscrew to secure the faceplate of the Network card to the E6L.



Tightening the exterior thumbscrew

- 13 Slide the core back into the E6L chassis, making sure the connectors face outward.
When the core is fully seated into the chassis, the two latches at the bottom of the chassis should be fully collapsed.
- 14 Tighten the four thumbscrews to secure the core to the chassis.
- 15 Proceed to “Confirming Installation.”

Confirming Installation

After installing the Network card, confirm that the installation was successful.

⚠ *VENUE software 5.1 or higher is required. If the newly installed Network card does not appear in the Options > Devices page, make sure VENUE 5.1 is installed on your system.*

To confirm installation:

- 1 Connect power to the E6L engine.
- 2 Connect an audio network cable from Network port **A** on the S6L control surface to Network port **B** on the top-most Network card.
For example, if you have just installed an AVB Network Card into Network slot 2, connect the cable to port **B** on the newly installed AVB card (in the middle, Network slot 2 of the engine).
⚠ *Only connect the control surface to port B on the top-most Network card.*
- 3 Power on your control surface and engine, and if necessary pair the engine to the control surface.
- 4 Go to the Options > Devices page. Your newly installed card should appear in the appropriate slot in the Network Cards column.
The default name for a Network card installed in slot 2 is “Ring 2.”
- 5 A firmware update of your newly installed Network card starts automatically after installation. Progress of the update is indicated on-screen.
- 6 When the firmware update is complete, go to the Options > System page, select Shutdown, and then power off both the control surface and the engine.
- 7 Power your control surface and engine back on. Your newly installed Network card is now ready for use. See the *VENUE S6L System Guide*, and the most recent edition of the *What’s New in VENUE* guide, for information on system configurations supported by your Network cards.